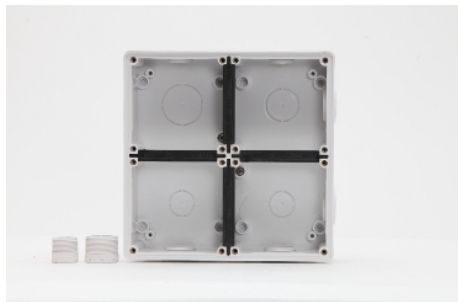


Product data sheet

Characteristics

PDL56E4RW

Enclosure, 4-Gang, 2x25mm 4x32mm Conduit Entry, Resistant White



Main

Range	56 Series
Product or component type	Enclosure

Complementary

Mounting mode	Surface mounted
Fixing center	156 x 156 mm
Number of gangs	2 x 2 gangs
Material	PVC (polyvinyl chloride)
Surface finish	Gloss
Colour tint	White
Length	198 mm
Width	198 mm
Depth	63 mm
Quantity per set	Set of 3
Type of packing	Carton

Environment

Ambient air temperature for operation	-40...55 °C
IP degree of protection	IP66

Offer Sustainability

EU RoHS Directive	Under investigation
-------------------	---------------------

The information provided in this documentation contains general descriptions and/or technical characteristics of the performance of the products contained herein. This documentation is not intended as a substitute for and is not to be used for determining suitability or reliability of these products for specific user applications. It is the duty of any such user or integrator to perform the appropriate and complete risk analysis, evaluation and testing of the products with respect to the relevant specific application or use thereof. Neither Schneider Electric Industries SAS nor any of its affiliates or subsidiaries shall be responsible or liable for misuse of the information contained herein.