

W SERIES FEED-THROUGH //

Features	Applications
<ul style="list-style-type: none"> Ex rated for hazardous use Identical size 2.5mm² to 10mm² VO flammability Halogen free 	<ul style="list-style-type: none"> One end plate for 2.5mm² to 10mm² Screw type and plug in type cross connects 120°C cont. temp rating Wide wire entry

Conductor Size: 2.5mm² Rating 800V 24A Thickness 5mm Type WDU2.5

Part number	Colour	Part number	Colour
10200000	Beige	10368000	White
10200800	Blue	10200600	Orange
10200200	Yellow	10200400	Red
10377100	Brown	10377000	Violet
10377200	Grey	10200100	Black

Conductor Size: 4.0mm² Rating 800V 32A Thickness 6mm Type WDU4

Part number	Colour	Part number	Colour
10201000	Beige	10367000	White
10201800	Blue	10367600	Orange
10201200	Yellow	10201400	Red
10378100	Brown	10201100	Black
10378000	Grey		

Conductor Size: 6.0mm² Rating 1000V 41A Thickness 8mm Type WDU6

10202000	Beige	10202800	Blue
----------	-------	----------	------

Conductor Size: 10.0mm² Rating 1000V 57A Thickness 10mm Type WDU10

10203000	Beige	10203800	Blue
----------	-------	----------	------

Conductor Size: 16.0mm² Rating 1000V 76A Thickness 12mm Type WDU16

10204000	Beige	10204800	Blue
----------	-------	----------	------

Conductor Size: 35.0mm² Rating 1000V 125A Thickness 18mm Type WDU35

10205000	Beige	1020580000	Blue
----------	-------	------------	------

Conductor Size: 70.0mm² Rating 1000V 192A Thickness 22mm Type WDU70

95121900	Beige		
----------	-------	--	--

Conductor Size: 95.0mm² Rating 1000V 232A Thickness 27mm Type WDU70/95

10246000	Beige *		
----------	---------	--	--

Conductor Size: 120.0mm² Rating 1000V 269A Thickness 32mm Type WDU120/150

10245000	Beige *		
----------	---------	--	--

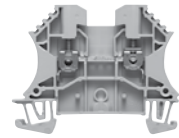
Conductor Size: 240.0mm² Rating 1000V 415A Thickness 36mm Type WDU240

1802780000	Beige		
------------	-------	--	--

NOTE: For higher current terminals see page 17 WDU70 onwards supplied complete with end plates *Also Available in sets of three

ACCESSORIES //

Part no.	Description	Type	Part no.	Description	Type
TS35 END STOPS – BEIGE					
03835600	Standard	EW35	10590000	W Series Large	WEW35/1
10612000	W Series Standard	WEW35/2	9540000000	Spring Clip Quickfix	ZEW35



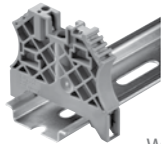
WDU2.5



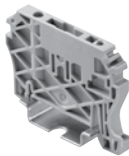
WDU70



EW35



WEW35/2



ZEW35

ACCESSORIES //

Part number	Type	Colour	Part number	Type	Colour
END PLATES/PARTITIONS					
10500000	WAP 2.5-10	Beige	EXTERNAL COMBS FOR WDU 2.5, WDU 4 AND WDU 6 ONLY		
FOR WDU 2.5 (5.0mm PITCH) 24 way (insulated)					
End Plate (for WDU 2.5-10)					
10500800		Blue	15790600	WQB B/24	Black
10500200	WAP 2.5-10	Yellow	50 WAY INSULATED COMBS (6.0mm PITCH) FOR WDU 4 ONLY		
10500700	WAP 2.5-10	Brown	16332800	VQB 1.5/50 BL	Blue
10500500	WAP 2.5-10	Grey	16332900	VQB 1.5/50 RT	Red
10500600	WAP 2.5-10	Orange	1635120000	VQB 1.5/50 SW	Black
10500400	WAP 2.5-10	Red	FOR WDU 6 (8.0mm PITCH)		
10500100	WAP 2.5-10	Black	Part number	Description	Type
Partition (for WDU 2.5-10)					
10501000	WTW 2.5-10	Beige	05454000	Bare Comb 58 way	QB 58 – straight
10501800	WTW 2.5-10	Blue	05453000	Bare Comb 58 way	QB 58 – angled
End Plate (for WDU 16 and WDU35)					
10501000	WAP 16-35	Beige	05460000	Insulation Strip for QB 58	INSPROF Black
10501800	WAP 16-35	Blue			

NOTE: Larger end plates are sometimes used as partitions for smaller terminals i.e.10501000 is the partition for WDU 2.5-10 and end plate for WDU 16 and WDU 35

Part number	Description	Type
CROSS CONNECTS – SCREW TYPE FOR WDU 2.5		
		YELLOW
10536600	2 way	WQV 2.5/2
10537600	3 way	WQV 2.5/3
10538600	4 way	WQV 2.5/4
10544600	10 way	WQV 2.5/10
15776000	32 way	WQV 2.5/32
CROSS CONNECTS – PLUG IN TYPE FOR WDU 2.5		
		YELLOW
16938000	2 way	ZQV 2.5N/2
16938100	3 way	ZQV 2.5N/3
16938200	4 way	ZQV 2.5N/4
16938800	10 way	ZQV 2.5N/10
1909000000	20 way	ZQV 2.5N/20 GE
16938900	50 way	ZQV 2.5N/50
		RED
1717910000	3 way	ZQV 2.5N/3
17179200	4 way	ZQV 2.5N/4
17179800	10 way	ZQV 2.5N/10
17181700	50 way	ZQV 2.5N/50
		BLACK
17180800	2 way	ZQV 2.5N/2
1718090000	3 way	ZQV 2.5N/3
17181000	4 way	ZQV 2.5N/4
17181600	10 way	ZQV 2.5N/10
1909020000	20 way	ZQV 4N/20 GE
17181900	50 way	ZQV 2.5N/50



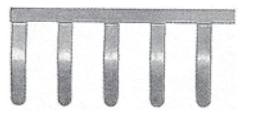
WTW2.5-10 / WAP 16-35



WQB B/24



VQB



QB58



WQV 2.5/2



WQV 2.5/10



ZQV 2.5N/2



ZQV 2.5N/10

TERMINALS //

TERMINALS //