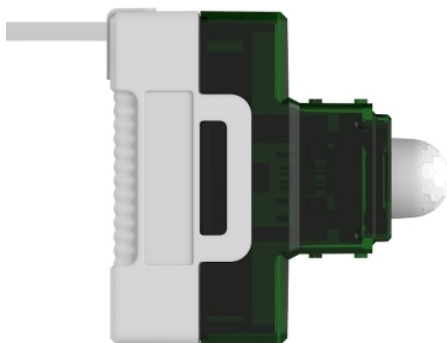


PDL352MPIR-TN

PDL Iconic, movement detector, PIR, 240 V, Translucent



Main

Range of product	PDL Iconic
Product brand	PDL
Product or component type	Movement detector
Function of module	Motion detection
Device application	Lighting Power circuit application
Sensor type	PIR

Complementary

Provided equipment	Carrier (plastic) Finishing accessory
[Ue] rated operational voltage	220/240 V AC 50 Hz 25 °C
Power consumption in W	1 W at 240 V AC
Maximum load current	3 A for per output
Rated power in W	100 W LED lighting 750 W incandescent 100 W fluorescent 400 W LV halogen 100 W motor
Protection type	Input surge protection for sensor
Electrical insulation class	Double insulation
Type of setting	Time adjustment: 20...900 s
Light intensity adjustment	10...2000 lux
Movement detection area	5 m
Detection angle	100° horizontal 82° vertical
Material	Plastic
Device mounting	Wall mounted
Mounting height	1.2 m
Type of installation	Indoor installation

Environment

IP degree of protection	IP20 (modular enclosure) conforming to IEC 60529
Ambient air temperature for operation	-10...50 °C
Ambient air temperature for storage	-20...60 °C
Relative humidity	5...90 % non-condensing
Standards	AS/NZS 60669.2.1

The information provided in this documentation contains general descriptions and/or technical characteristics of the performance of the products contained herein. This documentation is not intended as a substitute for and is not to be used for determining suitability or reliability of these products for specific user applications. It is the duty of any such user or integrator to perform the appropriate and complete risk analysis, evaluation and testing of the products with respect to the relevant specific application or use thereof. Neither Schneider Electric Industries SAS nor any of its affiliates or subsidiaries shall be responsible or liable for misuse of the information contained herein.

Offer Sustainability

Sustainable offer status	Green Premium product
REACH Regulation	REACH Declaration
EU RoHS Directive	Compliant EU RoHS Declaration
Mercury free	Yes
RoHS exemption information	Yes
China RoHS Regulation	China RoHS Declaration
Environmental Disclosure	Product Environmental Profile
Circularity Profile	End Of Life Information