



PLUG IN FUSE TERMINALS //

Features

- 5mm and 6mm Wide
- Turns a disconnect terminal into a fuse terminal in seconds

Part number	Description	Thickness	Rating	Fuse Size	Type
WTR2.5 Terminal plus SIHA 1 Fuse Holder					
7921560000	Fuse Holder – For all WTR terminals	5mm	250/400V 6.3A	20mmx5mm	SIHA3
1855610000	Terminal – 2.5mm ²	5mm	800V 16A	NA	WTR2.5
1855620000	Terminal – 2.5mm ² (with test socket screws)	5mm	800V 16A	NA	WTR2.5
7910180000	Terminal – 4mm ²	6mm	400V 24A	NA	WTR4
7910210000	Terminal – 4mm ² (with test socket screws)	6mm	400V 24A	NA	WTR4

For WTR2.5 and WTR4 accessories – refer to disconnect terminals – next section

LED indication (fuse blown) versions available – contact CSL

95376800	Plastic Cord	SIHA/V
----------	--------------	--------

TS35 W SERIES WS16 LEVER TYPE FUSE //

Part number	Conductor Size/Voltage/Description	Thickness	Rating	Type	Colour
20mm x 5mm 6.3 amp WS16					
10110000	10.0mm ²	8mm	500V 6.3A	WS16	Beige
LED INDICATION VERSIONS (Fuse Blown) Colour Red					
101100L12D	12 Vdc	8mm	500V 6.3A	WS16	Beige
101100LD	24 Vdc	8mm	500V 6.3A	WS16	Beige
101100LA	24 Vac	8mm	500V 6.3A	WS16	Beige
101100L1	110 Vac	8mm	500V 6.3A	WS16	Beige
101100L1D	110 Vdc	8mm	500V 6.3A	WS16	Beige
101100L2	240 Vac	8mm	500V 6.3A	WS16	Beige

For fuse link ordering information, see end of Fuse Terminal section. Other voltages, LED colours and Coloured WS16 fuse terminals available – contact CSL.

CROSS CONNECTS – 2, 3 and 4 way also available (screws required – order separately)

(installed utilising knockouts)

FOR WS16

03383000	10 way	QL10 bar
----------	--------	----------

NOTE: Screws for QL bars – 2 required for 2 way, 3 for 3 way.

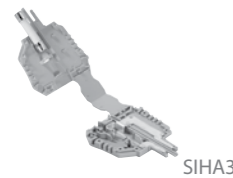
10521000	SCREWS	BS (M3x5)
----------	--------	-----------

BARE COMBS AND INSULATION STRIP (58 way)

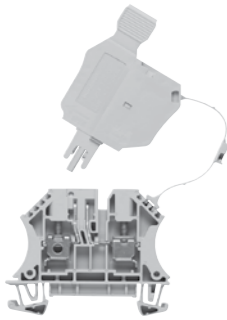
05454000	Bare comb	QB58 – straight
05453000	Bare comb	QB58 – angled
05460000	Insulation strip for above	INSPROF

WS16/2 16AMP RATED //

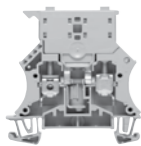
Part number	Conductor Size	Thickness	Rating	Type
for inch fuses 1"x 1/4" and 11/4"x 1/4"				
10140000	10.0mm ²	12mm	500V 16A	WS16/2



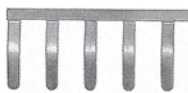
SIHA3



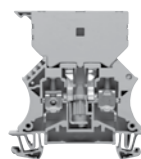
WTR with SIHA & Plastic Cord



WS16



QB58



WS16/2



ACCESSORIES FOR WS16 and WS16/2 //

Part number	Conductor Size/Description	Type
END PLATES/PARTITIONS		
10500000	End Plate	WAP2.5-10
10501000	Partition	WTW2.5-10
CROSS CONNECTS		
FOR WS16/2		
04707000	2 way	QL2
04710000	10 way	QL10
10521000	Screw for Cross Connect bars	BS M3X5

KSK TYPE //

Part number	Conductor Size/Description	Thickness	Rating	Fuse Size	Type
Fuse Terminal KSK (lock up carrier type) (enables circuit lockout)					
*MELAMINE THERMOSET TS35 & TS32					
38978200	10.0mm ²	13mm	250V 6.3A	20 x 5 and 25 x 5mm	KSK1/35(TS35)
38974200	10.0mm ²	13mm	250V 6.3A	20 x 5 and 25 x 5mm	KSK1(TS32)
38975200	10.0mm ²	13mm	250V 13A	11/4" x 1/4	KSK2(TS32)
38980200	10.0mm ²	13mm	440V 15A	11/4" x 1/4	KSK3/35(TS35)
38976200	10.0mm ²	13mm	440V 15A	11/4" x 1/4	KSK3(TS32)

Part number	Conductor Size/Description	Type
TS35 END STOPS		
03835600	Standard	EW35
10612000	W Series Standard	WEW35/2
10590000	W Series Large	WEW35/1
9540000000	Spring Clip Quickfix	ZEW/35
TS32 END STOPS		
02061600	Standard	EWK1
01993600	Large	EWK2
10676000	W Series	WEW32/1

For fuse link/cartridge ordering information – refer to the end of the Fuse Terminal Section

* Note: WEMID W series versions also available – Type KSKM1, KSKM2 and KSKM3

WSI 25 FUSE TERMINALS 120KA 32Amp 415Volt //

Type	Description	Application	Part Number	
WSI 25 Fuse Terminals	WSI25 120kA HRC DIN Rail Mount Fuse Holder	Recommended fuse holder for all Weidmüller SPD devices and 45Volt applications	1 Pole	1966020000
			2 Pole	1966020000
			3 Pole	1966080000

HRC FUSES FOR WSI 25 FUSE HOLDERS //

Part number	Amperage	Part number	Amperage
FUSE654388	4 AMP	FUSE16035	16 AMP
FUSE16027	8 AMP	FUSE16039	25 AMP
FUSE16031	10 AMP	FLUKE16043	32 AMP



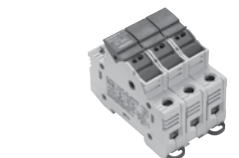
WTW2.5-10



QL2



KSK1/35



WSI 25 Fuse Terminals



HRC Fuse