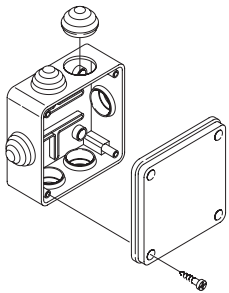


SCAME PLUGS, CONNECTORS & ENCLOSURES



Surface Mounting Junction Boxes



Technical Specifications	
Made of	self-extinguishing engineering plastic
Reference Standards	IEC 60670-1
Colour	RAL 7035 grey
Operating Temperature	-25°C to +85°C
Full insulation to	EN 60439-1



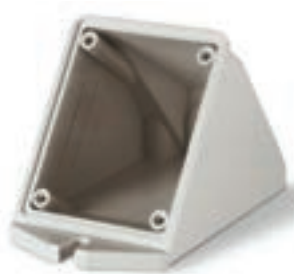
FLANGE ADAPTOR	
654.0108	Adaptor plate for rectangular to square appliance inlets (small base) fits 32 Amp enclosure.



SCAME Straight Surface Box	
570.0016	16 Amp
570.0032	32 Amp



SCABOX + SLV IP44	
680.001	65DIA x 35mm
680.002	80DIA x 40mm



SCAME Angle Box	
570.0116	16 Amp
570.0132	32 Amp



SCABOX + SLV IP44	
680.003	80 x 80 x 40mm



SCAME Surface Box	
570.0163	63 Amp
570.0125	125 Amp



SCABOX + SLV IP56	
686.204	100 x 100 x 50mm
686.208	240 x 190 x 90mm
686.209	300 x 220 x 120mm
686.404	100 x 100 x 80mm
689.206	150 x 110 x 70mm

SCAME PLUGS, CONNECTORS & ENCLOSURES

Firstflex has taken every precaution to ensure accurate information in this catalogue, but accept no liability for any errors or omissions. Firstflex reserves the right to modify specifications at any time.