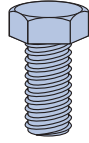


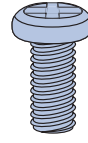
## HEX HEAD SET SCREWS

Part No.	Size	Mass kg/100
HHS0620	M6 x 20	0.6
HHS0625	M6 x 25	0.7
HHS0630	M6 x 30	0.8
HHS0820	M8 x 20	1.2
HHS0825	M8 x 25	1.4
HHS0830	M8 x 30	1.5
HHS0840	M8 x 40	1.8
HHS1020	M10 x 20	1.9
HHS1025	M10 x 25	2.1
HHS1030	M10 x 30	2.5
HHS1040	M10 x 40	3.0
HHS1224	M12 x 25	4.2
HHS1230	M12 x 30	4.5
HHS1240	M12 x 40	5.1
HHS1260	M12 x 60	7.5
HHS1640	M16 x 40	9.5



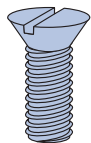
## PAN HEAD SCREWS

Part No.	Size	Mass kg/100
PHS0620	M6 x 20	0.6
PHS0625	M6 x 25	0.7
PHS0630	M6 x 30	0.8
PHS0825	M8 x 25	1.3



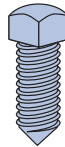
## COUNTERSUNK HEAD SCREW

Part No.	Size	Mass kg/100
CKS0615	M6 x 15	0.3
CKS0620	M6 x 20	0.4
CKS0820	M8 x 20	0.8
CKS1020	M10 x 20	1.3



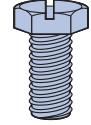
## CONE POINT SET SCREW

Part No.	Size	Mass kg/100
CPS1040	M10 x 40	2.3
CPS1240	M12 x 40	3.8
CPS1250	M12 x 50	4.4



## SLOTTED HEX HEAD SET SCREWS

Part No.	Size	Mass kg/100
SHS0620	M6 x 20	0.6
SHS0825	M8 x 25	1.2
SHS0830	M8 x 30	1.3



## HEXAGON NUTS

Part No.	Size	Mass kg/100
HN06	M6	0.2
HN08	M8	0.5
HN10	M10	0.8
HN12	M12	1.8
HN16	M16	3.3
HN20	M20	5.6



## FLAT WASHERS

Part No.	Size	Mass kg/100
FW06	M6	0.1
FW08	M8	0.1
FW10	M10	0.3
FW12	M12	0.4
FW16	M16	0.8
FW20	M20	0.9



## SPRING WASHERS

Part No.	Size	Mass kg/100
SW06	M6	0.1
SW08	M8	0.2
SW10	M10	0.3
SW12	M12	0.4
SW16	M16	0.6
SW20	M20	1.0



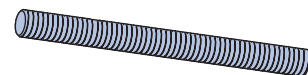
## SHAKEPROOF LOCK WASHERS

Part No.	Size	Mass kg/100
LW06	M6	0.05
LW08	M8	0.06
LW10	M10	0.08
LW12	M12	0.10
LW16	M16	0.13
LW20	M20	1.20



## UNIROD STEEL THREADED ROD

Part No.	Size	Max. Recommended Tensile Load (kN)	Mass kg/ea
UR06	M6	3.22	0.6
UR08*	M8	5.84	1.1
UR10*	M10	9.28	1.5
UR12*	M12	13.48	2.4
UR16*	M16	25.12	3.9
UR20*	M20	39.20	6.3



**Standard Finish:** Zinc Plated.

\*Also available in Heavy Duty Galvanised.

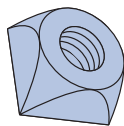
**Standard Length:** 2m

**Unirod Load Data:** Maximum recommended tensile load is based on a safety factor of 2.5 using the appropriate stress area of thread and ultimate tensile strength of 430 MPa.

## P2676 – SWIVEL NUT

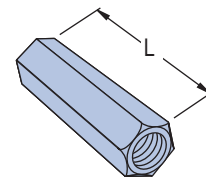
Part No.	Size	Mass kg/100
P267910	M10	1.7
P267912	M12	1.5

Note: Swivel nuts are used with P2676 and P2677. Order size as required.



## ROD COUPLERS

Part No.	Size	Length 'A'	Mass kg/100
RC06	M6	20	1.2
RC08*	M8	20	2.3
RC10*	M10	30	4.0
RC12*	M12	40	7.8
RC16*	M16	50	12.2
RC20*	M20	50	19.0



**Standard Finish:** Zinc Plated.

\*Also available in Heavy Duty Galvanised.