

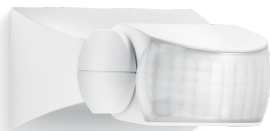


Domestic users / Sensors / Motion Detectors / IS 1

IS 1

Information copy

Targeted detection and attractive price. Infrared motion detector IS 1, for indoors and out, ideal for targeted coverage of small areas, 120° angle of coverage, reach up to 10 m, selectable time and twilight threshold, sensor turns through 30° and tilts through 180° for exact adjustment of the detection zone.



Details

3JAHRE
GARANTIE

3 years functional warranty

500w

500 W max.



2 - 2000 lux



ideal 2 m



IP54



max. 10 m



60° horizontal, 180° vertical



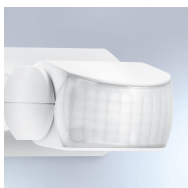
infrared sensor 120°



energy saving



8 sec - 35 min



UV-protected material

Technical specifications IS 1 White

European Article Number (EAN)	4007841600310
Dimensions(w x h x d):	50 x 80 x 120 mm
Model	Movement sensor
Voltage	230-240 V/50 Hz
Sensor type	Passive infrared
Application	indoors and outdoors
Installation	Wall Ceiling
max. output (resistive load, incandescent lamp)	500 W
max. output (uncorrected, inductive, $\cos \varphi = 0.5$, e.g. fluorescent lamps)	500 VA max.
max. output (electronic ballasts, capacitive, e.g. low-energy lamps)	4 ea. max., C ? 88 μ F
Detection angle	120°
Capability of masking out individual segments	Yes
Swivelling range	60 °
Tilting range	180 °
Reach	10 m max.
Response value luminosity	2-2000 lx
Time setting	8 sec. - 35 min.
Degree of protection (IP)	IP54
Protection class	II
Version	White

Application

outdoors and indoors

for targeted detection of movement in small areas close to the building

