

## OUTDOOR CABINET

### VENTED OUTDOOR WALL MOUNTED CABINET

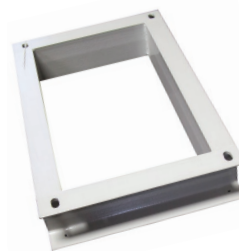


#### FEATURES:

- Designed to protect sensitive network equipment from harsh environments where equipment may be exposed to dust or water
- IP45 rated for dust and water
- Replaceable filters for fans and air vents on the front door
- Front door has 130 degrees of movement, swinging from left to right
- Dual fan kit included
- Rain hood can be opened to access fans and filter
- Sealed bottom cable entry gland
- Static Loading: 60kg
- Adjustable 19" rack mount rails
- Water and dust proof polyurethane door joint strip
- Optional Plinths available to floor mount cabinets
- Wall mount accessories included
- Fully welded design, supplied complete, no assembly required
- Made from cold rolled steel
- Surface finish: Degreasing, pickling, phosphoric wash, cleaning, and powder coated
- 2 Year Warranty on cabinet. Subject to use within the static loading specifications, operation within normal environmental conditions and adequate and appropriate mounting installation
- If installed, 1 Year Warranty on fans

#### FLOOR MOUNT PLINTHS

MODEL CODE	DIMENSIONS (WxDxH)
RODWPL-400	600 x 400 x 100mm
RODWPL-600	600 x 600 x 100mm



RODWL-400



RODWL-600

Model Code	Capacity	WxDxH (Internal)	WxDxH (External)	Includes
RODW12-400FK	12U	600 x 400 x 600mm	610 x 425 x 640mm	Dual extraction fans, input/output air filters
RODW12-600FK	12U	600 x 600 x 600mm	610 x 625 x 640mm	Dual extraction fans, input/output air filters
RODW18-400FK	18U	600 x 400 x 875mm	610 x 425 x 915mm	Dual extraction fans, input/output air filters
RODW18-600FK	18U	600 x 600 x 875mm	610 x 625 x 915mm	Dual extraction fans, input/output air filters
RODW24-400FK	24U	600 x 400 x 1160mm	610 x 425 x 1200mm	Dual extraction fans, input/output air filters
RODW24-600FK	24U	600 x 600 x 1160mm	610 x 625 x 1200mm	Dual extraction fans, input/output air filters

**OTHER CABINETS SIZES AVAILABLE ON REQUEST**

## OUTDOOR CABINET

### VENTED OUTDOOR WALL MOUNTED CABINET

Rain hood included  
as standard

Replaceable Filter  
for Fans

Dual Fan Kit

Air Vents on  
Front Door

Sealed bottom  
cable entry

Replaceable Filter  
for Air Vents

19" Adjustable Front and  
Rear Mounting Rails

Grounding pin

Polyurethane  
door joint strip

Dual  
locking system

Air Vents on  
Front Door